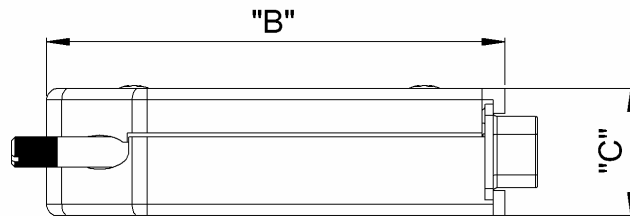
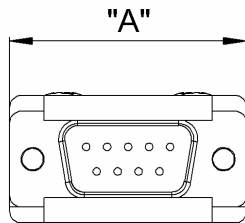


D-Sub Connector with cage clamp termination



Mechanical Data:

Dimensions look at the table

Plastic housing

- ABS black
- oder ABS metallised
- Screw lock
2 x knurled screw 4/40 UNC,
- Cable clamp

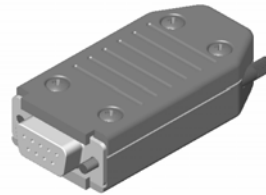
Housing ABS	Dimensions in mm		
	A	B	C
9-pin	31,00	60,00	16,60
15-pin	39,50	75,00	16,60
25-pin	53,00	75,00	16,60

Cage clamp termination

Good for cores with:

Cross section: max. 0,5 mm²

Core diameter: max. 10,5 mm



Electrical Data:

Electric strength: <= 100V

Ampacity: 1,2A

Withstand voltage: 1kV/mm

Nominal voltage: <= 100V

Air gap and leakage distance: 0,5mm

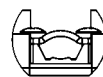
Protection class IP 20

Flammability: UL 94HB

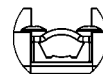
Operating temperature:

-20 °C to + 85 °C

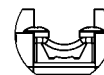
Clamping range shield clamp:



Pan head screw 8 mm:
max. clamping range:
ca. 10,5 mm



Pan head screw 6 mm:
max. clamping range:
ca 8 mm



Pan head screw 6 mm:
min. clamping range:
ca. 3 mm

Housing ABS	metallised (EMC-Version)		Black (standard)	
	Male	Female	Male	Female
9-pin	10015620	10015720	10015600	10015700
15-pin	10015820	10015920	10015800	10015900
25-pin	10016020	10016120	10016000	10016100